

Thank you for your interest in quality homes uniquely designed and built by DV Residential.

**Other builder's options are Standard at DV Residential!**

Visit our website for a complete listing of standard features and available options.

Choose one of our floor plans or one of your own and we will build your new home on our lot or yours.



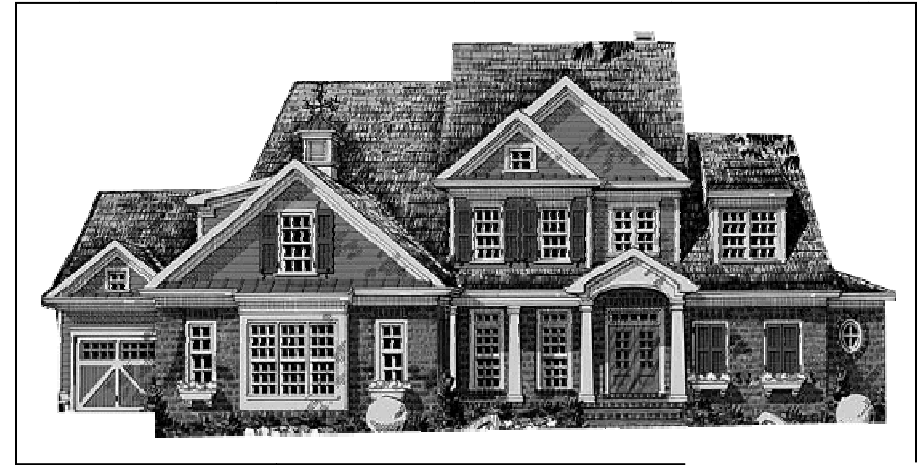
Our Mission is to design & build high quality homes for today's families. DV Residential, LLC is a growing custom home builder where each customer is treated with respect and dignity. Our size allows us to dedicate more time during the design & building process than our larger peers.

**DV RESIDENTIAL, LLC**

Milwaukee Metro  
main: 414.427.4500  
fax: 414.427.4545

website: [www.dvresidential.com](http://www.dvresidential.com)

*Luxury Executive 2- Story*



*Front Elevation*

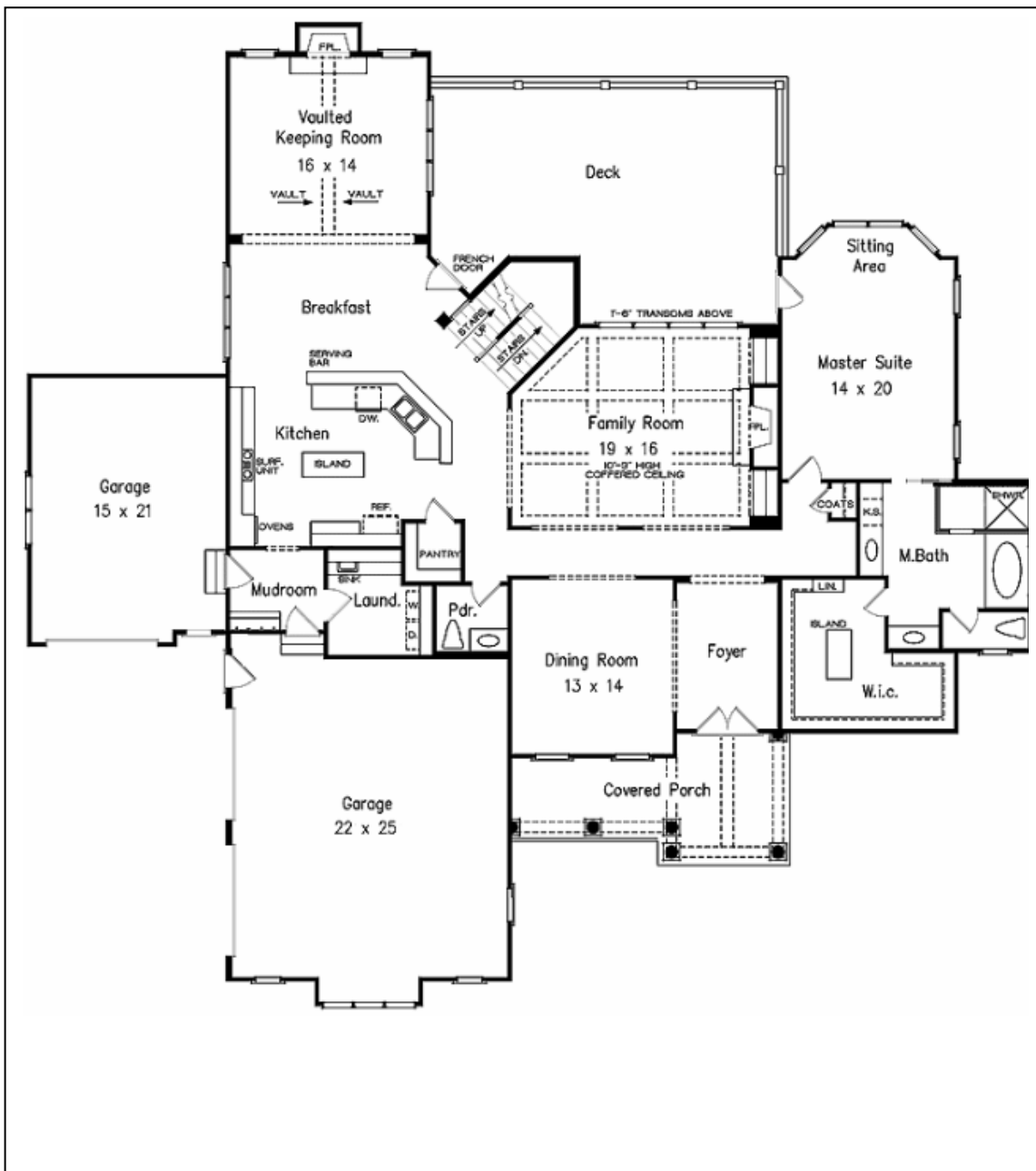
# The Santa Barbara

*4,150 Square Feet*



*More To Come Home to....*

**Milwaukee Metro's Most Complete Turnkey Home Builders**

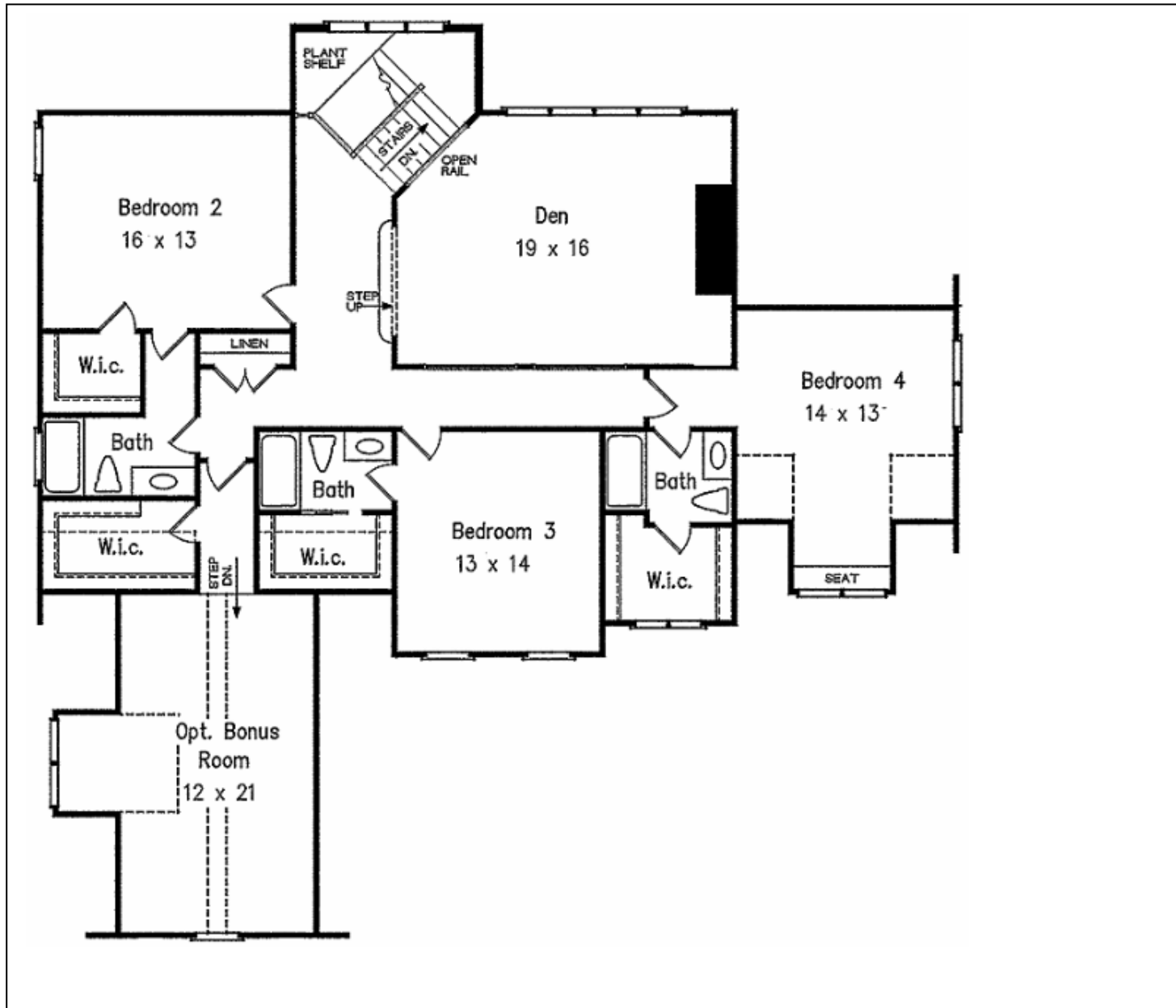


- o Cement Board Siding
- o Brick Masonry/Stone Veneer(front elev)
- o Huge Covered Porch
- o Low-E, Argon-filled Wood Windows
- o 10 ft Ceilings (1<sup>st</sup> Floor)
- o 9 ft Basement
- o Game/Recreation Room (2<sup>nd</sup> floor)
- o 3.0 Car Garage with Storage Area
- o 1.0 Car Guest Garage
- o Large Kitchen with Granite Countertops
- o Ceramic Tile Baths
- o Hardwood Flooring (Kitchen, Breakfast, Foyer)
- o Master Bedroom Suite (1<sup>st</sup> floor)
- o 3 Bedrooms, PLUS 1<sup>st</sup> floor Guest Bedroom
- o Large Master Suite w/Huge Walk-in Closet
- o Lighted Double Trey Ceiling in Master Bedroom
- o 3-1/2 Baths, plus 1 full bath Basement rough
- o 48" Gas Fireplace in Great Room; 33" in Master
- o Knock-down Wall Finish
- o Arched Entryways
- o Kohler Plumbing Fixtures
- o Moen/Delta Faucet Handles
- o Great/Gathering Room
- o Den/Study
- o Built-in - Entertainment/Media Center
- o Fireplace - Gas
- o Guest Suite-including Full Bath
- o Flooring - Tile, Hardwood, Slate, Ceramic
- o Built-in - China Cabinets
- o Guest Room
- o Home Theater (2<sup>nd</sup> floor)

**Appliances Included (*generous allowances*)-**

- Built-in Bosch Dishwasher
- Space-Saver Microwave
- Built-in Double Oven
- Cook- top

*First Floor*



*Second Floor*



# *The Santa Barbara* DIMENSIONS

| Rooms                                       | Dimensions (Feet) |          |
|---|-------------------|----------|
|   | Width             | Depth    |
| Dining Room                                 | 13.0              | 14.0     |
| Great Room                                  | 19.0              | 16.0     |
| Kitchen (Including Breakfast)               | 22.0              | 20.0     |
| Master Bedroom                              | 14.0              | 20.0     |
| Bedroom #2                                  | 16.0              | 13.0     |
| Bedroom #3                                  | 13.0              | 14.0     |
| Optional Bedroom #4 (2 <sup>st</sup> Floor) | 12.0              | 21.0     |
| Den/Rec Room (2 <sup>nd</sup> Floor)        | 19.0              | 16.0     |
| Laundry                                     | 8.0               | 8.0      |
| 3-Car Garage                                | 30.5              | 22.5     |
| 1-Car Garage                                | 16.0              | 22.5     |
| Other                                       | Dimensions (Feet) |          |
|   | Width             | Depth    |
| House                                       | 80' - 10"         | 77' - 6" |
| <b>Square Footage</b>                       | <b>4,150</b>      |          |